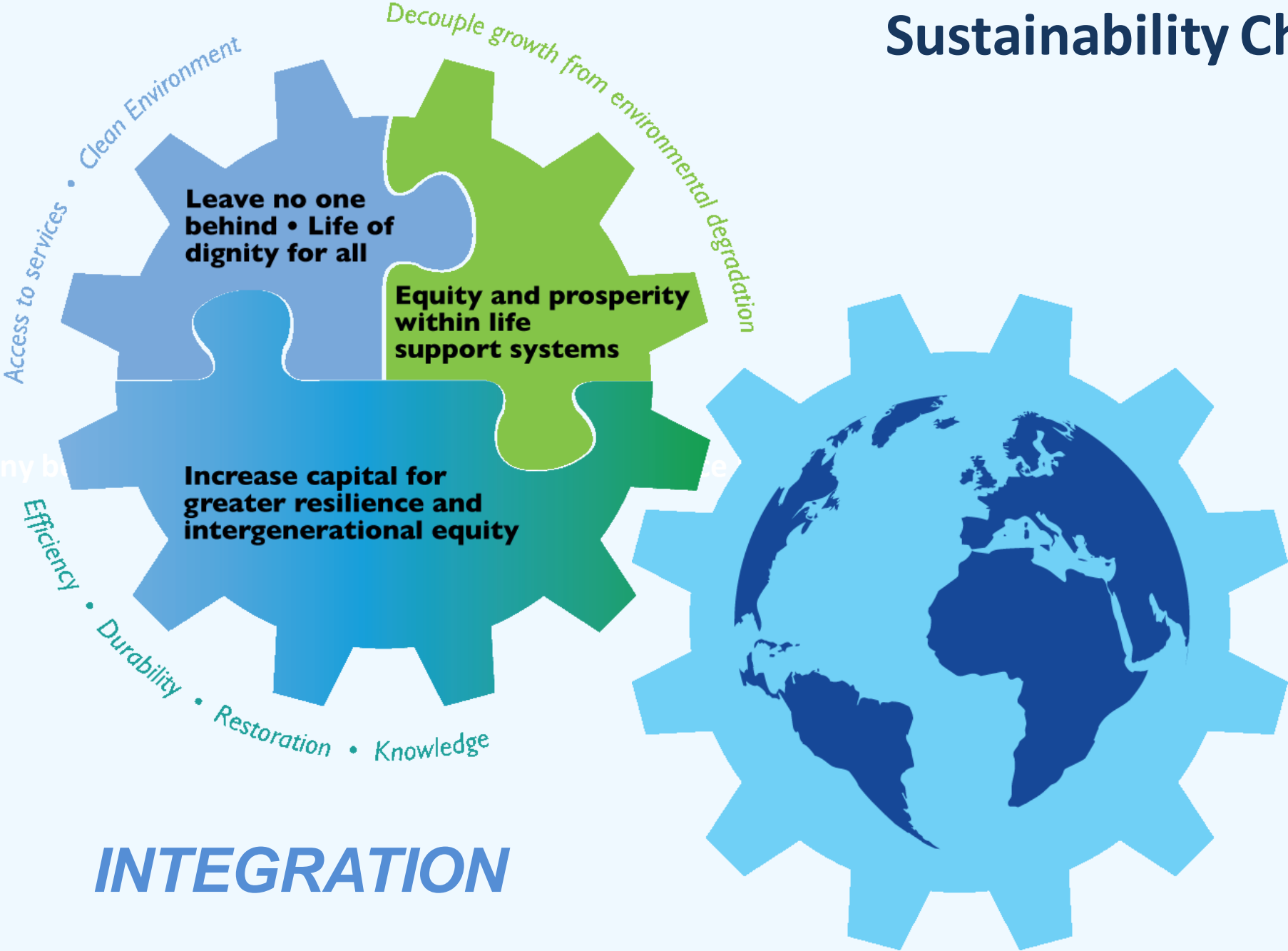


# Sustainability Check 2015



**INTEGRATION**

# GLOBAL SNAPSHOT



**1972** 3.6 billion **2015** 7.6 billion



**> 1°C** rise in ocean and global average temperatures

**50%** of people living in cities

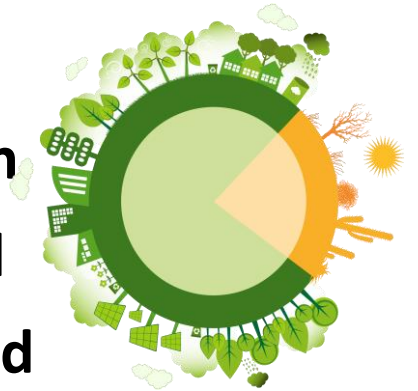


**8m** premature deaths from air pollution

**30-40%** of the planet is used for plant production

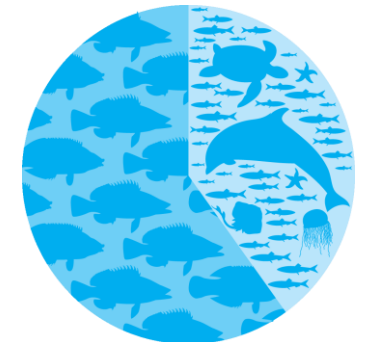
**40%** natural vegetation legally protected

**25%** of global soils are degraded



**90%** wastewater in developing countries flows untreated into freshwater systems

**>50%** marine regions unprotected





**UNHEALTHY ENVIRONMENTS**



**WIDESPREAD  
OBSERVED IMPACTS**

---

**A CHANGING WORLD**

Temperature increases, sea-level rise,  
ocean acidification, changing seasons,  
new rainfall patterns



# **VULNERABLE STATES**

threatened by sea level rise  
and extreme events

A vibrant coral reef with many colorful fish swimming around it. The scene is set in clear blue water, with various types of coral in shades of green, yellow, and white. Numerous small, bright orange and yellow fish are scattered throughout the water, some swimming in schools and others individually. The overall atmosphere is bright and lively.

# CORAL REEFS

50% globally

---

threatened due to climate  
change, coastal development  
& land-based pollution

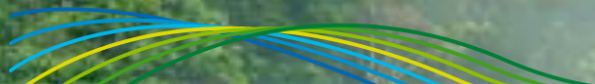
---

# Human health and ecosystems

**Ebola spread** illegal trade in bush meat due to urbanisation and deforestation

**Land use** access rights, localised soil productivity loss and farming

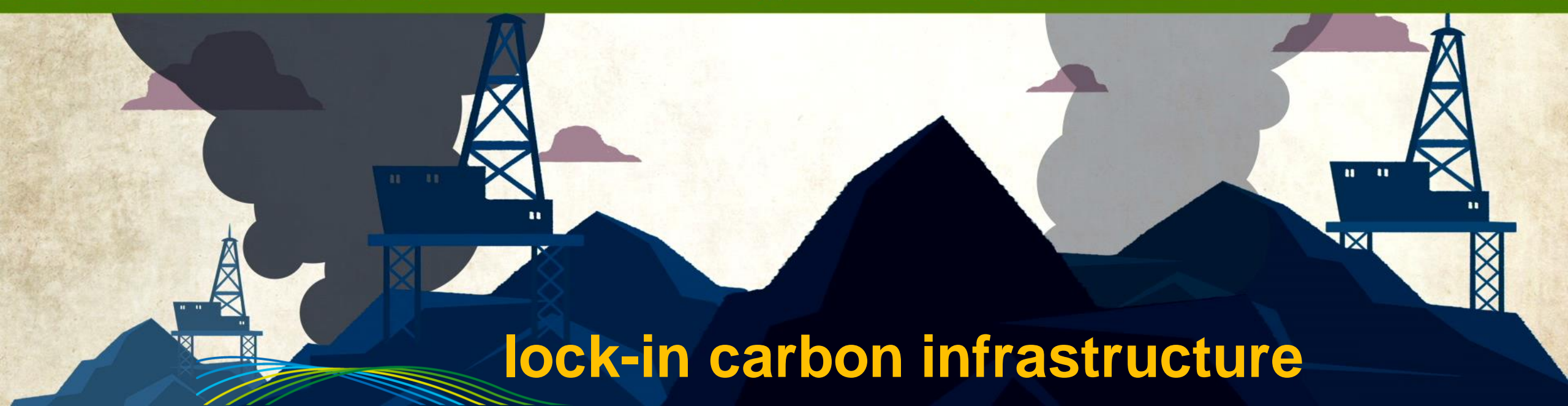
**Water** conservation and water rights



higher costs



lock-in carbon infrastructure





# Urbanization



**60-80%**

**of global energy consumption  
is used by urban cities**

**75%**

**of carbon emission comes  
from urban cities**



# UNSUSTAINABLE PRODUCTION



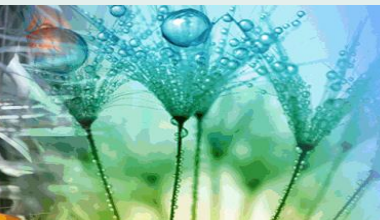
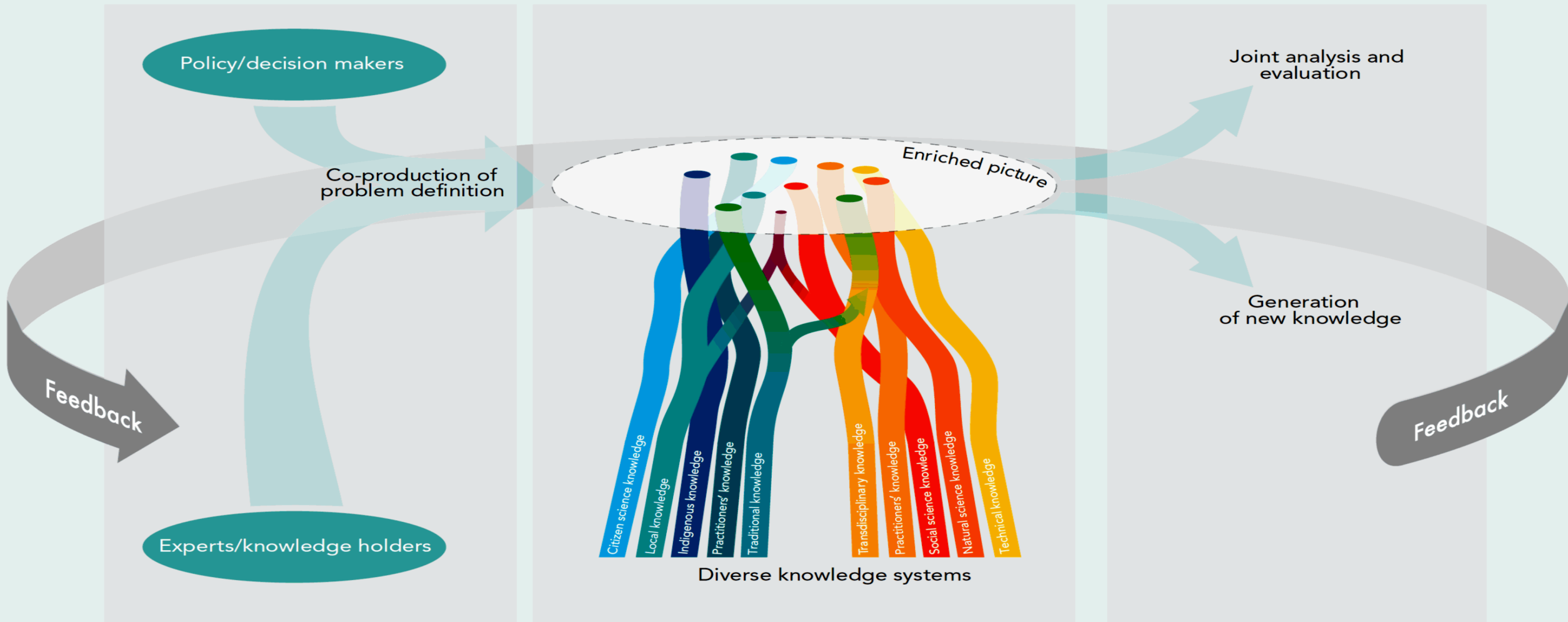
# GLOBAL ECONOMY



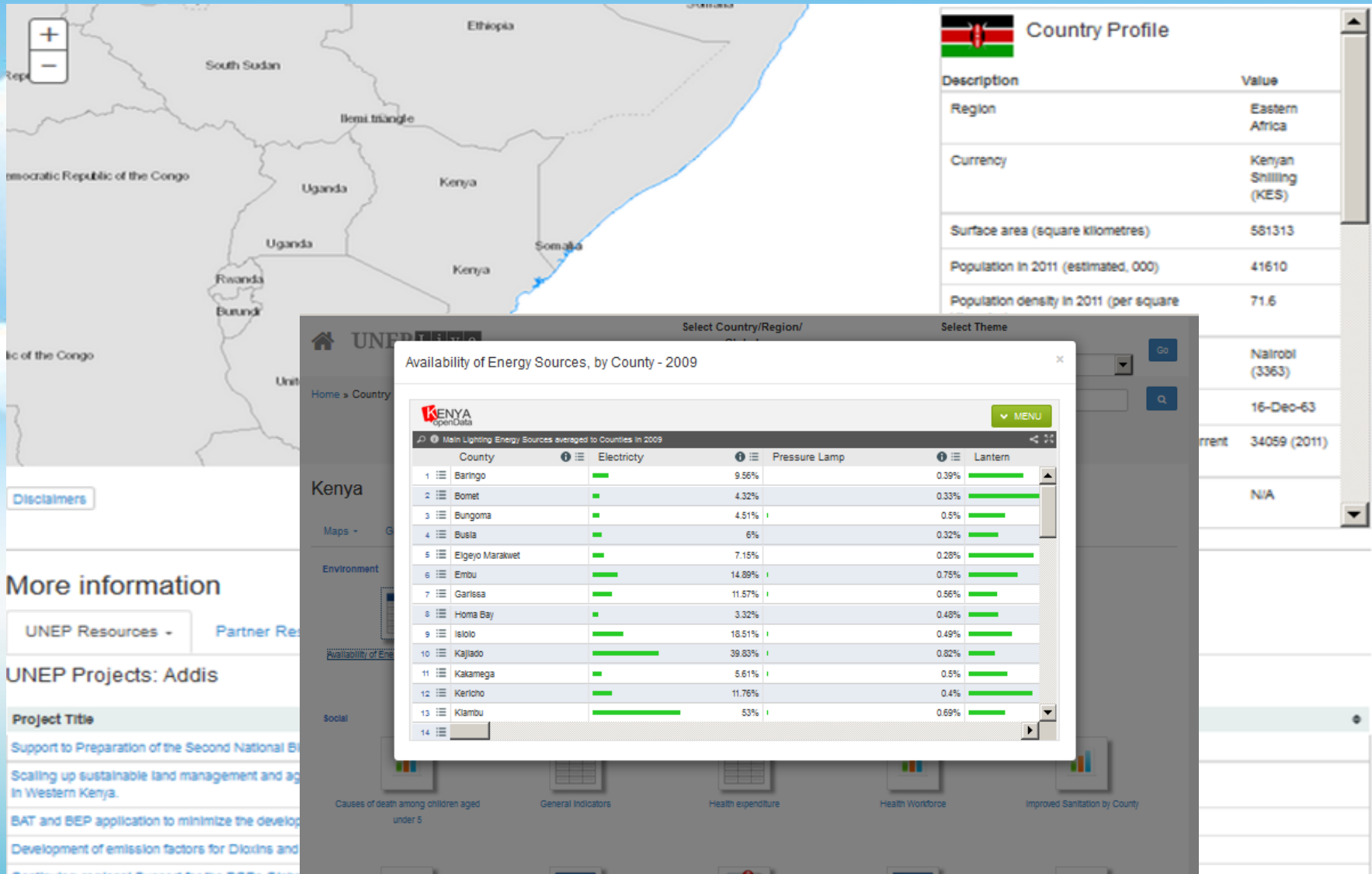
wealth of 85 people = 3.5 billion poorest



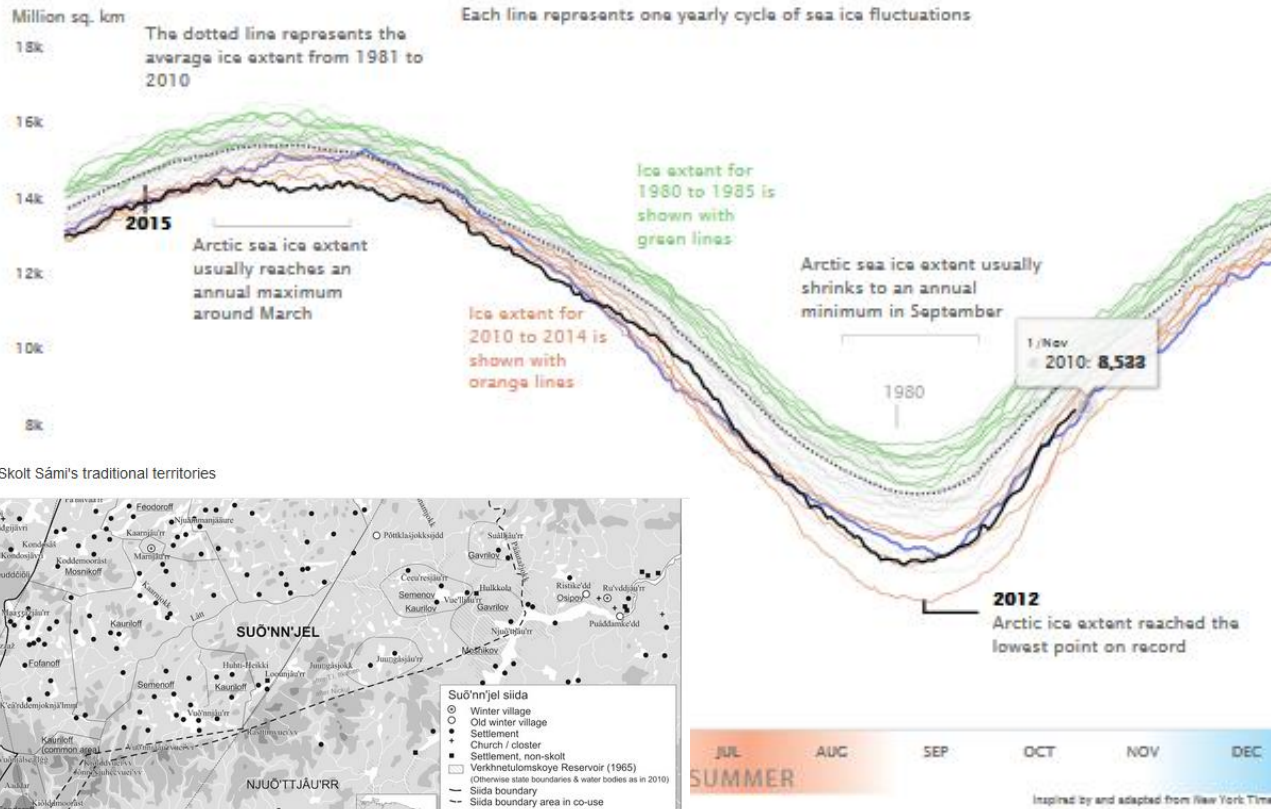
# Building sustainability using indigenous, traditional, local and scientific knowledge systems



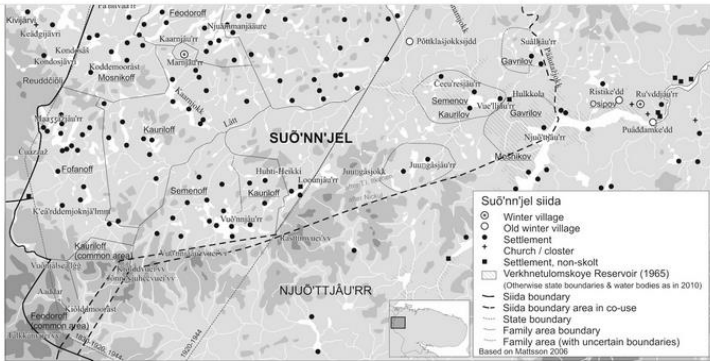
# UNEP Live Open Data & National Policies



### Arctic Sea Ice Extent



The Skolt Sámi's traditional territories



In contemporary times, there have been many changes to the lives of the Eastern Sámi peoples. Many of their salmon rivers have been dammed for hydroelectricity production. However, two of the main salmon streams, Näättámö in Finnish-Norwegian borderlands and Pono in the Eastern and Central parts of the Kola Peninsula, Russia remain healthy and productive. Since 2009, with the help from United Nations University – Traditional Knowledge Initiative, Indigenous Peoples Climate Change Assessment, Nordic Council of Ministers and other partners, the Eastern Sámi communities have started to document changes to salmon using traditional knowledge, and in cases where it has been appropriate, begun to install collaborative management measures to try to preserve the salmon in the context of rapid changes.

Source: Adapted from the Mustonen, Tero and Mustonen, Kaisa (2011): Eastern Sámi Atlas, Snowchange Cooperative, 2011.



### Regional Air Pollution Monitoring Networks

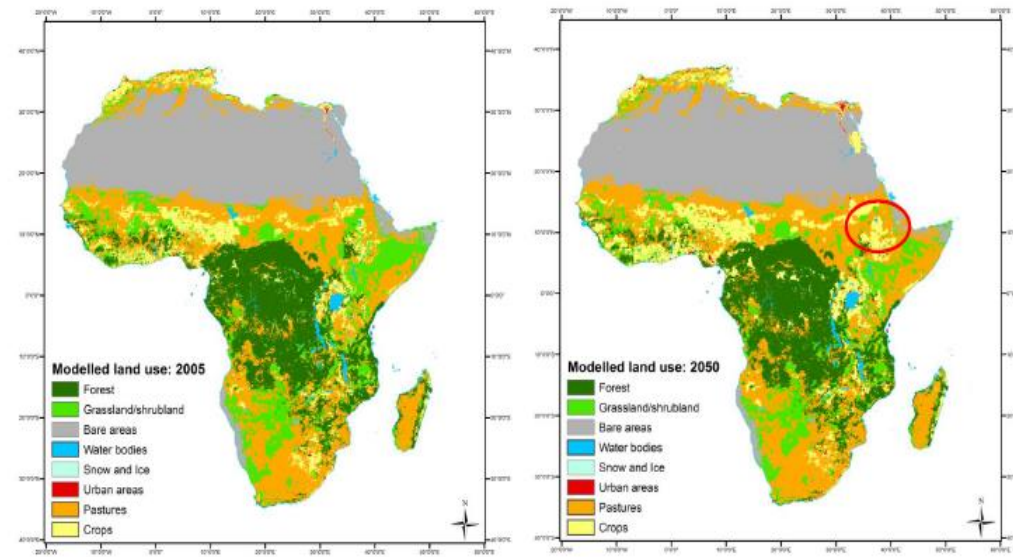
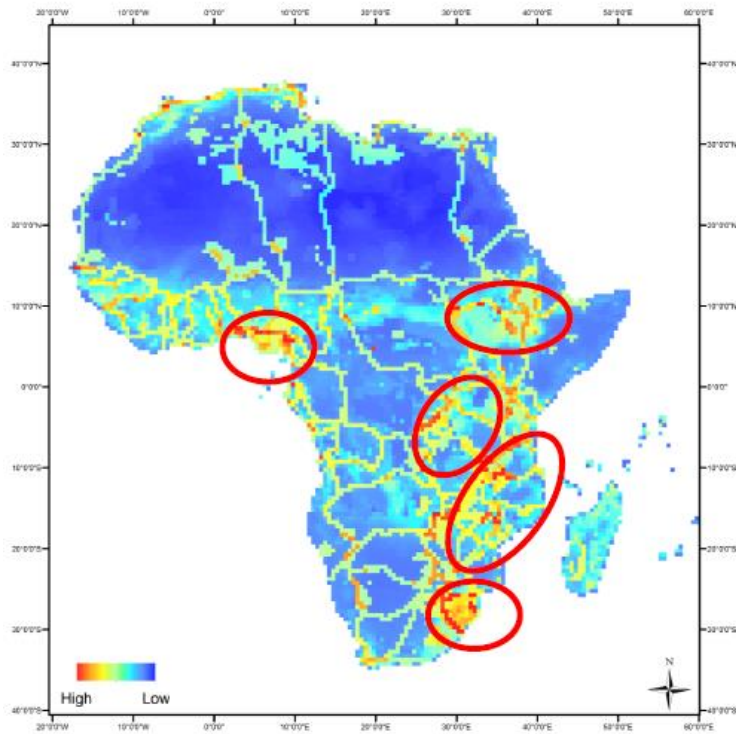


3.7m

deaths due to outdoor air pollution



# Infrastructure Development, People and Nature



Modelled land use change in Africa

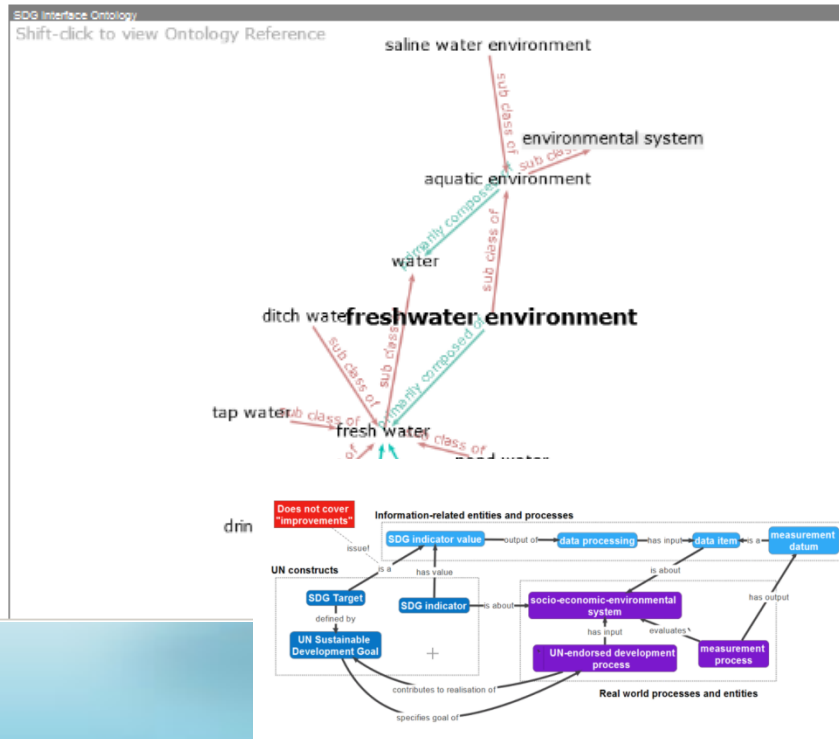
Overlap between Ecosystem Service assets and biodiversity and human development pressures showing main areas of impact

# SDG Indicators, Ontology & Web Intelligence



Welcome to the UNEP Live SDG page! This interactive dashboard visualizes the multiple pathways from indicators to targets and goals showing their connections through data and definitions in the SDG Interface Ontology. It also provides access to a new set of multilingual web intelligence tools to help users analyze stakeholder perceptions and track emerging trends - the information is assimilated, filtered and annotated from a wide range of online sources (news media, social networking platforms, Fortune 1000 company sites and environmental organizations).

Search for a term:    
(optional) AND



The 'UN SYSTEM DATA CATALOG' interface displays a search results page for 1299 datasets. It includes a search bar, a 'Reset' button, and a table of results. The table columns are Organization, Dataset title, Theme(s), Country, Standard, and Updated. The 'Organization' column lists 'ODHA', 'Bangladesh', 'Education', 'Other', 'Health', 'Social', 'Settlements (slums, informal, other)', and 'Cambodia'. The 'Dataset title' column lists 'Bangladesh: Education', 'Bangladesh: Other', 'Bangladesh: Social', 'Bangladesh: Settlements (slums, informal, other)', and 'Cambodia: Administrative Services'. The 'Updated' column shows dates like '07/27/2016'.

The 'UNEP Live WEB INTELLIGENCE' dashboard for 'air quality monitoring' shows a search bar with the term 'air quality monitoring' and a date range of '0-16 out of 16' from '31 Aug 2015 - 31 Oct 2015'. The dashboard includes a 'Themes' section with a bar chart showing the number of items for 'Air' (1676), 'Biodiversity' (1244), 'Climate Change' (1343), and 'Water' (1690). A 'Share of Change by Topic' pie chart shows 20% for 'Air', 22% for 'Water', and 58% for 'Climate Change'. A world map shows the location of 'air quality monitoring' in the Asia-Pacific region. The main content area displays a list of news items, including 'New technology is keeping the air we breathe under an unprecedented level of scrutiny' and 'UTM Sets up Temporary Air Quality Monitoring Station on Campus'. An 'Associations' section shows a search history for 'air quality monitoring' with 15 results.

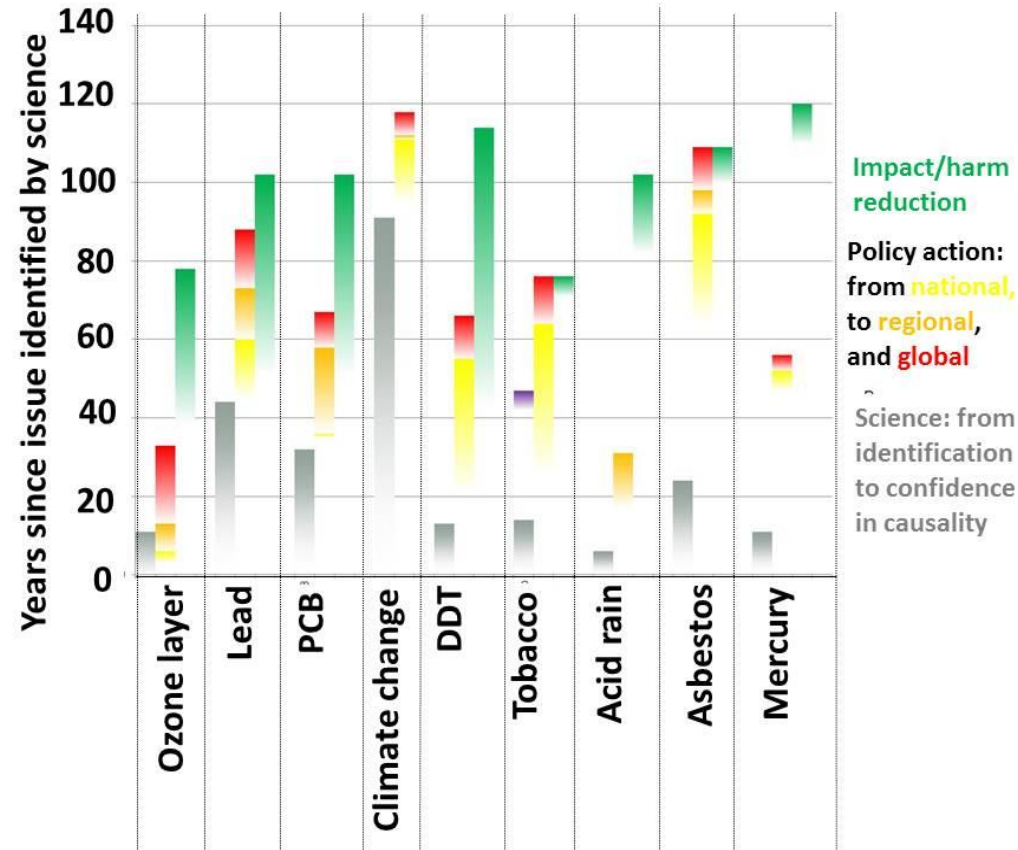




## RESOURCE EFFICIENCY



# Time delays between science and policy



# INNOVATION

An illustration on a textured, light-colored background featuring several stylized elements: a green truck with an orange cargo cover on the left; a tall green building with a grid pattern in the center; a green car with an orange roof rack in the middle; a green truck carrying a large orange washing machine on the right; and a green factory with two smokestacks on the far right. The foreground is a yellow-green curved surface with several orange pine trees. Vertical light rays in yellow and blue emanate from the top.

**USD 3.7 trillion estimated savings from clean low-carbon technologies**