

Emerging Diseases & Global Health Policies

The Ebolavirus outbreaks: From emergence to pandemic

How we learned a lot, but remember a little

Jean Paul Gonzalez

Metabiota Inc., Senior Staff Scientist



Proprietary & confidential information, please do not distribute

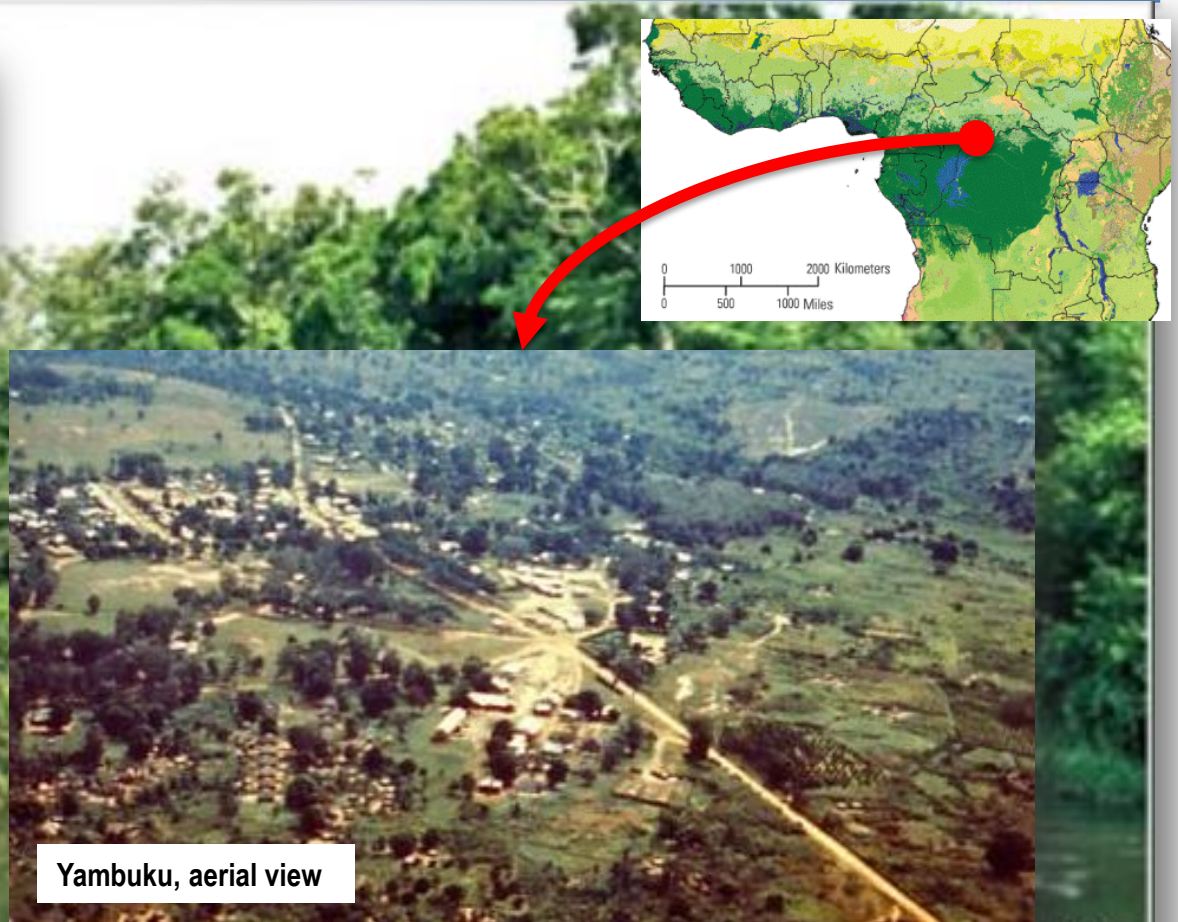
METABIOTA

World Science Forum, Budapest November 6th 2015



September 1st 1976, Yambuku, Zaire (*alias* DRC): the emergence and discovery of Ebolavirus in Central Africa.

Pierre Sureau, WHO team performing infection control



Yambuku, aerial view

PETER PIOT



Proprietary & confidential information, please do not distribute

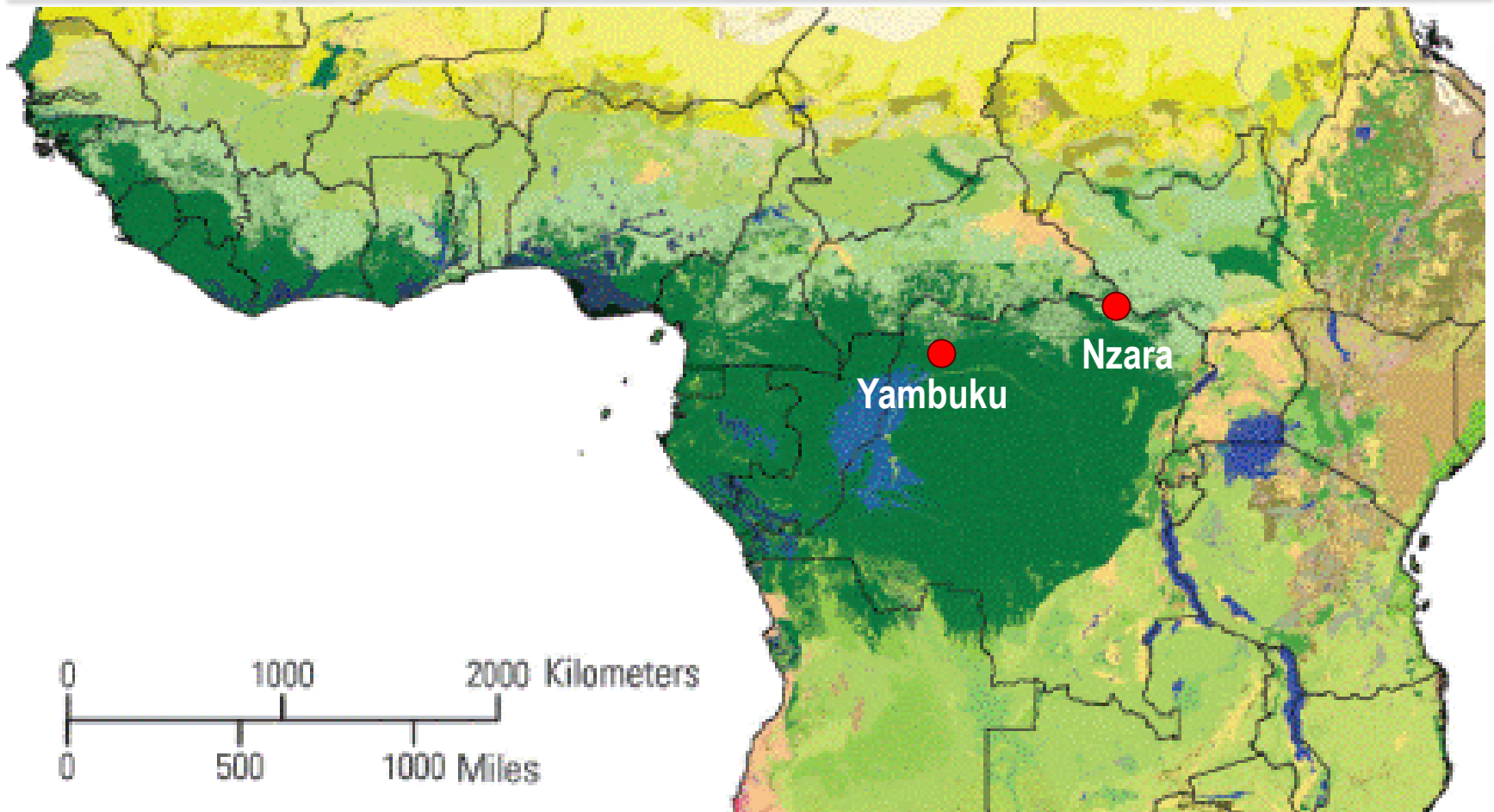
METABIOTA

(Sources : CNN, Joel Breman)

World Science Forum, Budapest November 6th 2015



Yambuku to Nzara



Proprietary & confidential information, please do not distribute Breman et al. The epidemiology of Ebola haemorrhagic fever in Zaire, 1976

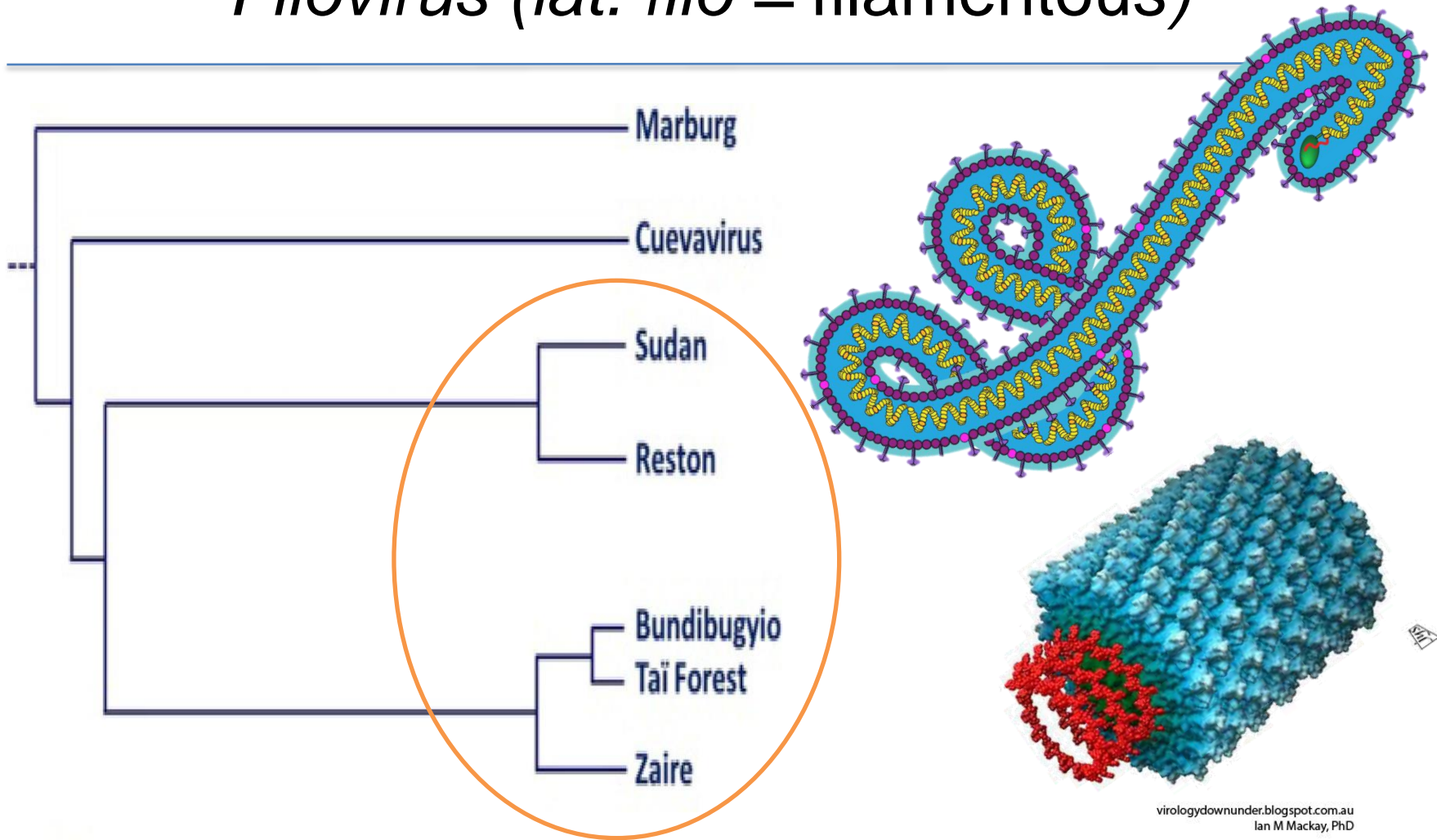
METABIOTA

World Science Forum, Budapest November 6th 2015



Ebolavirus biodiversity and structure

Filovirus (lat. *filo* = filamentous)



virologydownunder.blogspot.com.au
Ian M Mackay, PhD



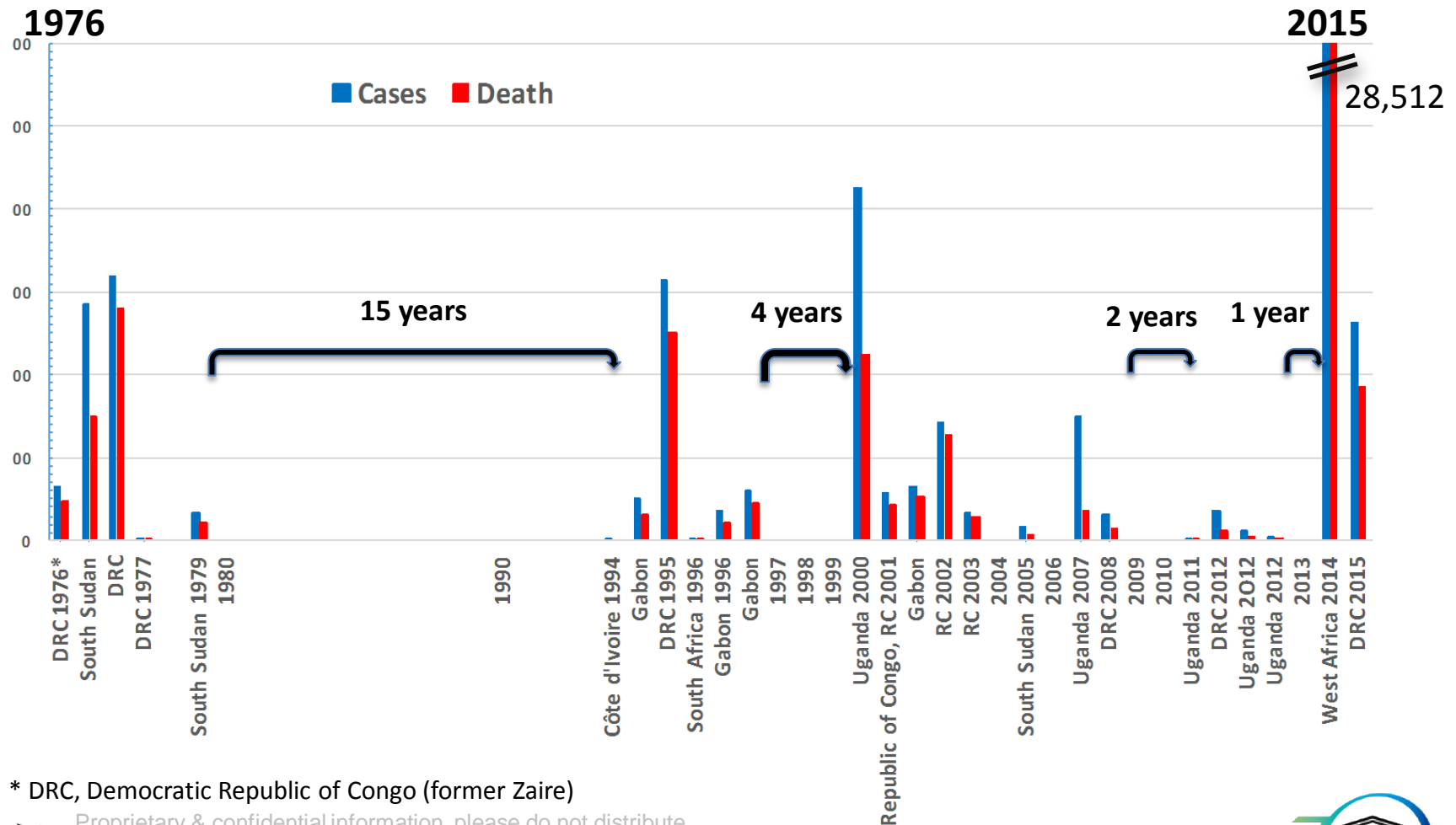
Proprietary & confidential information, please do not distribute

METABIOTA

World Science Forum, Budapest November 6th 2015



Timeline of the Ebola fever outbreaks and emerging events in Africa



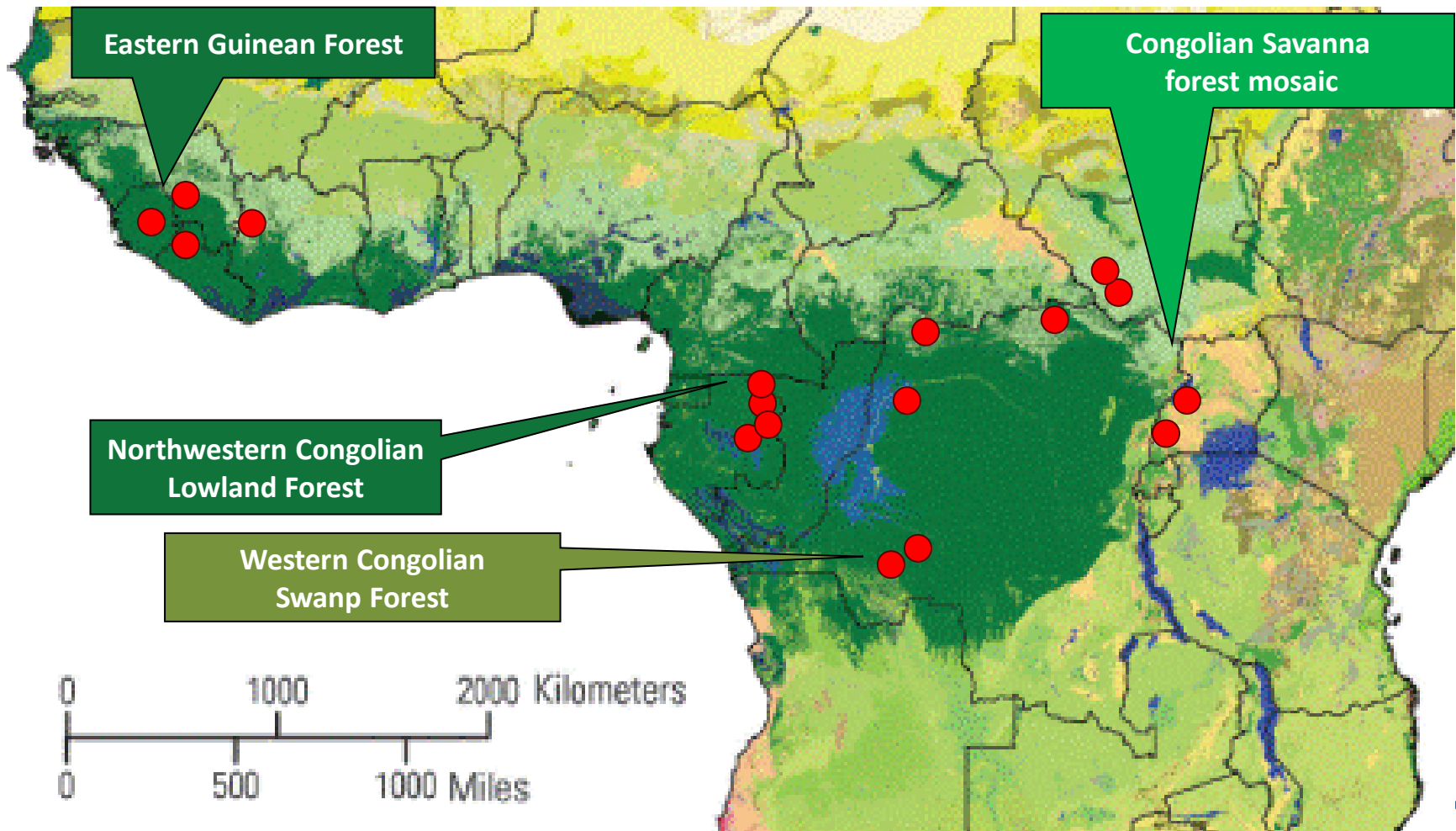
Proprietary & confidential information, please do not distribute

METABIOTA

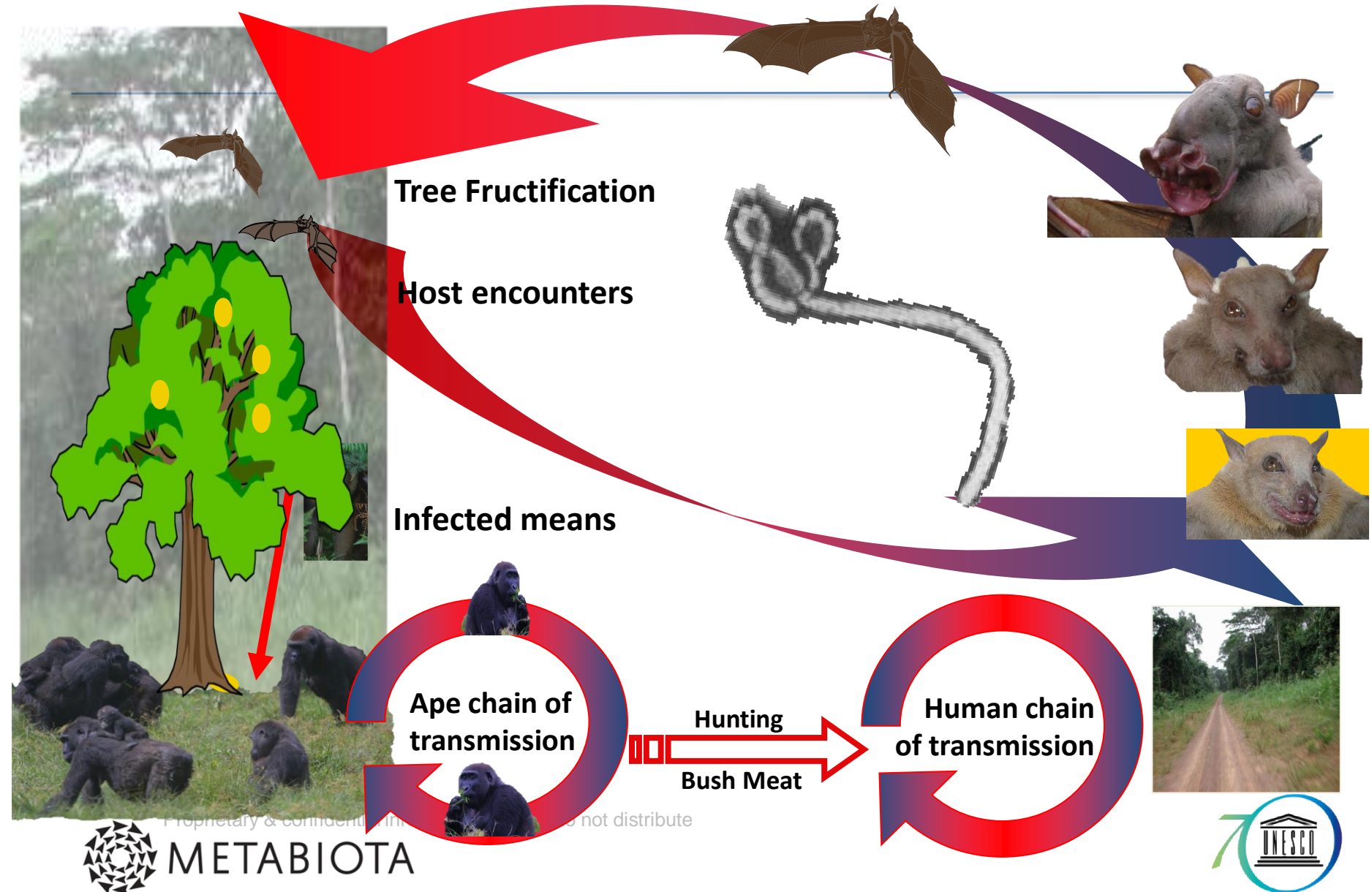
World Science Forum, Budapest November 6th 2015



Territorial Eco-regions of Ebola virus emergence : The Tropical moist broadleaf forest



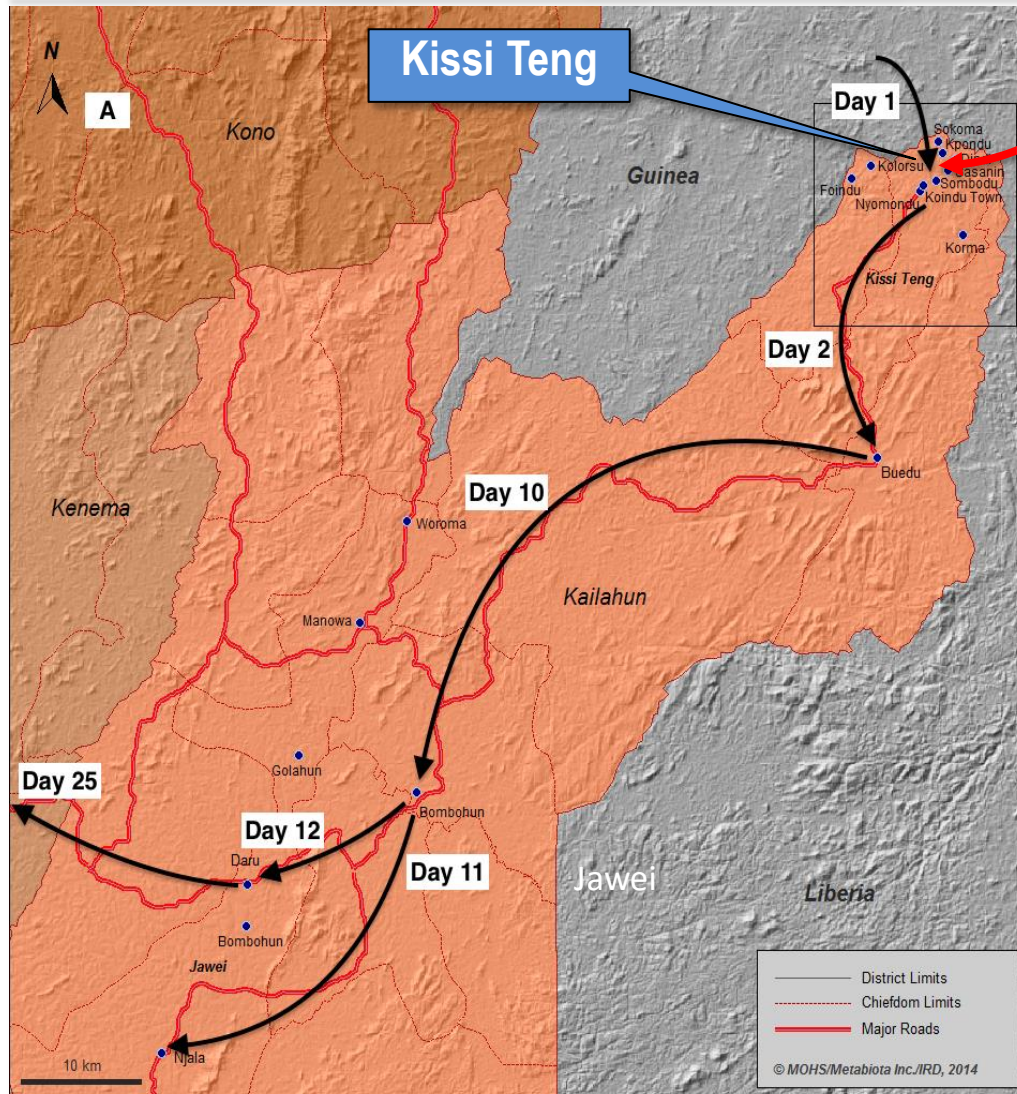
Ebolavirus natural history: Frugivorous bat as a natural host of Ebola virus in Gabon



Initial foot prints of EVD in Sierra Leone

2. March 2014: First imported case in Sierra Loene

1. December 2013 Index case in Guinea



40 km



North East of **Kissi Teng**, the
Meliandu village of the
Kissidougou region, Guinea

100 km



From Marc Souris, IRD

Learning from Mistakes

1. Exhausted funding

2. Community deny

3. Late warning

4. Inadequate

Response

1. Emergency funding, budget reallocation,
Insurance

2. Counseling, educating, history & culture

3. Capacity-building, early responder teams

4. Extended synergistic international
response with local health authorities



Proprietary & confidential information, please do not distribute

METABIOTA



Peparedness for the next pandemic

For the Community

**Understanding,
Compliance & Altruism**

Capacity Building

**Early Warning &
Biosurveillance**

Funding

**Immediate, accurately
allocated**



Proprietary & confidential information, please do not distribute

METABIOTA



Thank you for your attention



Source: popularmechanics.com



Proprietary & confidential information, please do not distribute

METABIOTA

World Science Forum, Budapest November 6th 2015

